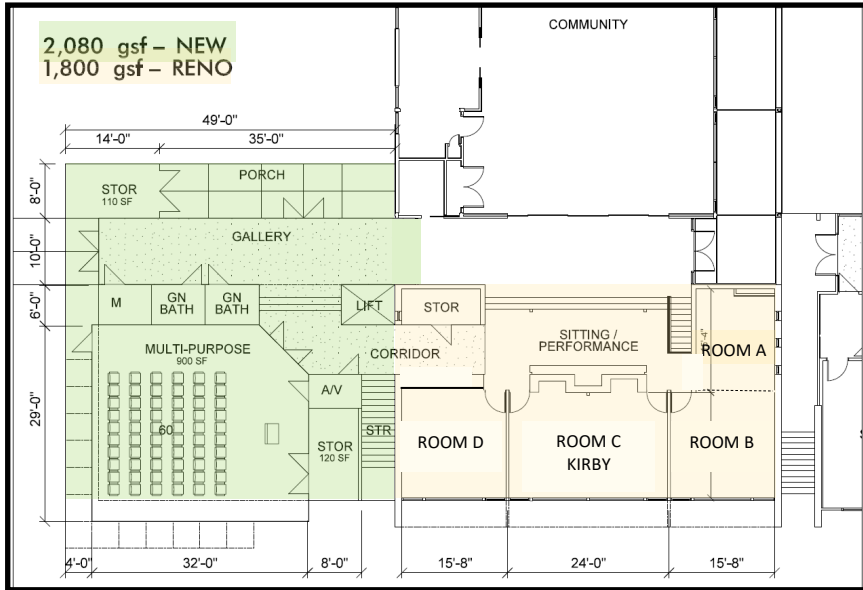
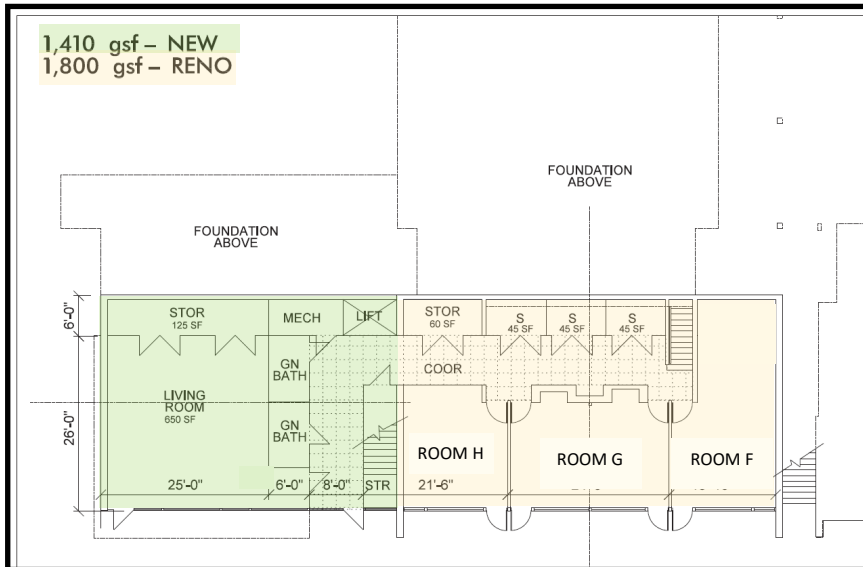


Upper Level of the Jones Meeting/Classroom Wing and Addition



Lower Level of the Jones Meeting/Classroom Wing and Addition






Conceptual Drawings from 2018, subject to adjustments

Recap in a Nutshell...

September 2019 rev. 1

Why Are We Doing A Building Project?

In 2017, a building plan emerged from four years of exploration. It focused on these priorities identified by the congregation:

-  Create the space needed by our thriving Religious Education Program for Sunday worship and classes;
-  Provide more space for our many ministries, committees, covenant groups, SEA courses, choirs, fellowship and community groups to effectively pursue our common mission;
-  Make our facility more welcoming and accessible to all.

What Is the Building Project We Are Doing?

In 2018, once the budget was reconciled to balance re-estimated costs and available funds, the Building Project was divided into:

Phase I: Fix up the Jones Building’s class/meeting room spaces as soon as vacated by the tenant preschool, with volunteer workers organized by the church’s Building & Grounds team.

Phase II: Build a new addition to the Jones Building, augmenting funds available from the 2018 campaign with additional funds raised to “close the gap” and honor the commitment to minimize debt-service burden on the church’s operating budget.

Phase III: Undertake certain high-priority improvements to the Jones Building (e.g. acoustics, HVAC, kitchen functioning) that can be done as separate projects after completion of Phase II, at such time as the necessary funding becomes available.



Renovating Existing Rooms ("Phase I")

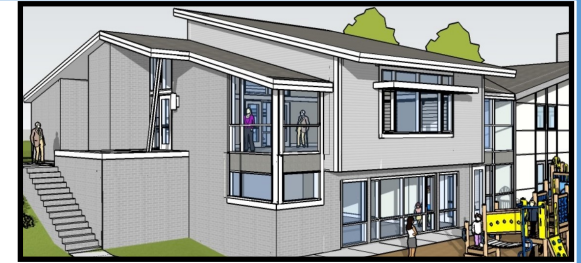
Jones Building Upper Level

- As part of Phase I, the Kirby Room plus 3 smaller rooms on this level will be cleaned, prepped and painted.
- These rooms will be configured for flexible use as adult meeting rooms throughout the week, and will also meet the Sunday morning classroom requirements for children's Religious Education (RE).
- The 4th small room will be converted to a passageway-with-storage connecting to the new building's upper level during Phase II.

Jones Building Lower Level

- The three playrooms downstairs will be cleaned, prepped and painted to meet the requirements for three rooms dedicated to nursery, toddler and pre-K use.
- Some spaces must wait for Phase II construction to resolve groundwater issues before renovation can be completed, and to convert the former kitchen area to a passageway-with-storage connecting to the new building's lower level.
- During Phase II, existing but dysfunctional bathrooms will be converted to storage space. (Replacement lower level bathrooms will be provided within the new construction.)

Constructing Two-Story Addition ("Phase II")



Upper Level

The "Multipurpose Room" will meet requirements for:

- Community meetings and other adult gatherings not accommodated by the renovated rooms in the existing space — such as greater seating capacity and the ability to be darkened to show movies, documentaries, and such.
- Children and youth worship gatherings on Sunday mornings.
- Rites of Passage gatherings.

Lower Level

The "Living Room" will meet requirements for:

- Informal adult meetings throughout the week.
- Middle school and high school youth group meeting space on Sundays.
- Both Levels will include additional space for storage.

Welcoming Features (Accessibility/Comfort)

- An interior lift will connect the Community Room level with both upper and lower levels.
- Strategic exterior doors between the Community Room, the Courtyard and the Commons will be equipped with automatic door openers.
- Bathrooms: A pair of accessibly-configured, family friendly and gender-neutral bathrooms will be installed on both upper and lower levels of the new building addition.